

**产品特点 / FEATURES:**

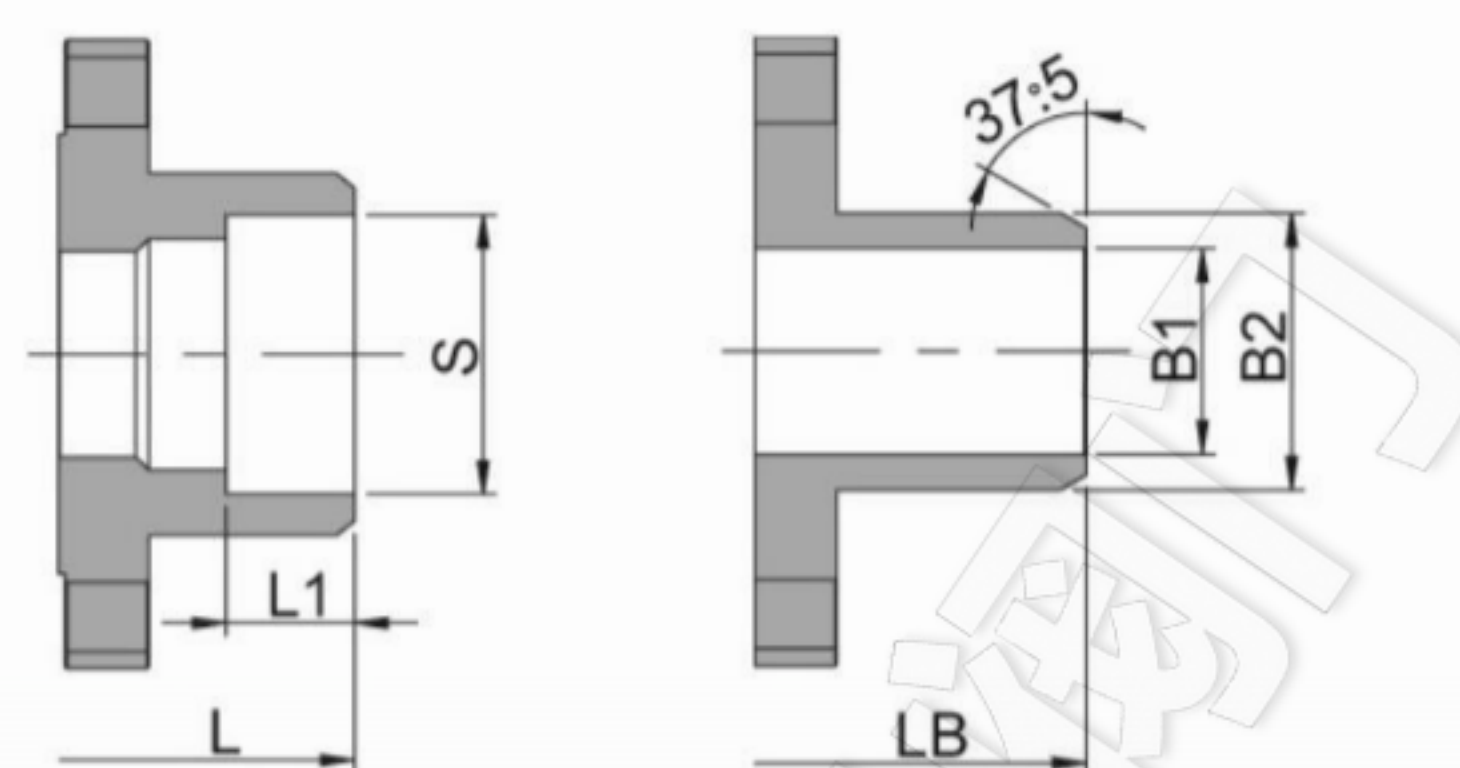
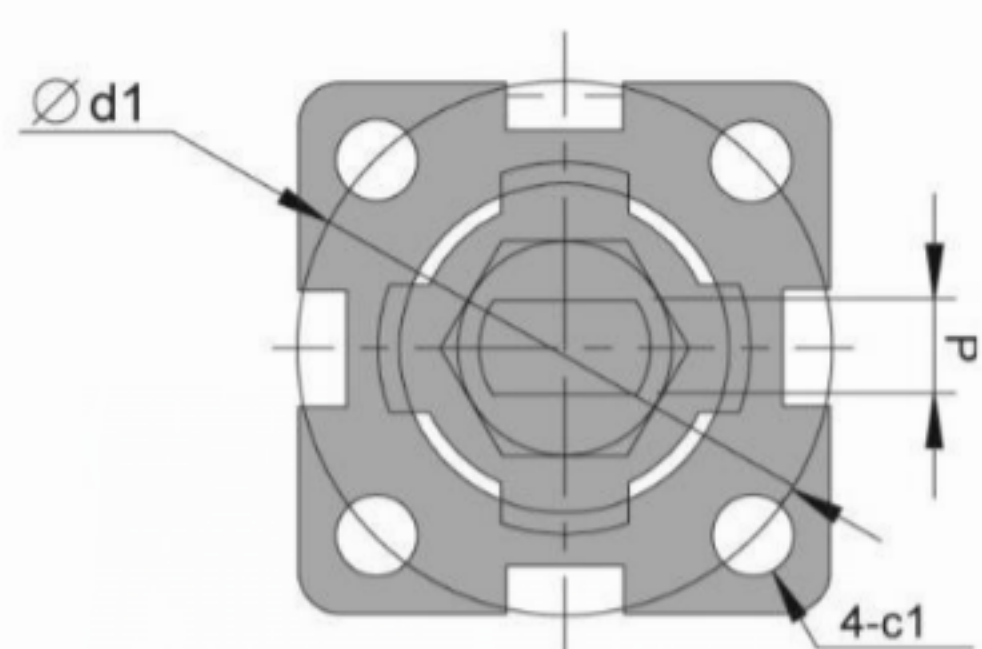
阀杆带有防脱出装置设计 Blow-out Proof Stem  
 钢球球槽上有泄压孔设计 Pressure Balance Hole In Ball Slot  
 多种螺纹端供选择 various Thread Standards Available  
 采用ISO 5211 支架安装执行器平台设计  
 Built In ISO 5211 Bracket Mount For Easy Automation

**标准 / STANDARDS:**

设计标准 / Design: ASME B16.34  
 壁厚标准 / Wall Thickness: ASME B16.34  
 螺纹标准 / Pipe Thread: ASME B1.20.1, BS21  
 DIN 2999/259, ISO 228/1 JIS B 0203, ISO 7/1  
 对焊标准 / Butt Weld: ASME B16.25  
 承插焊标准 / Socket Weld: ASME B16.11  
 检测标准 / Inspection & Testing: MSS SP-110, EN 12266

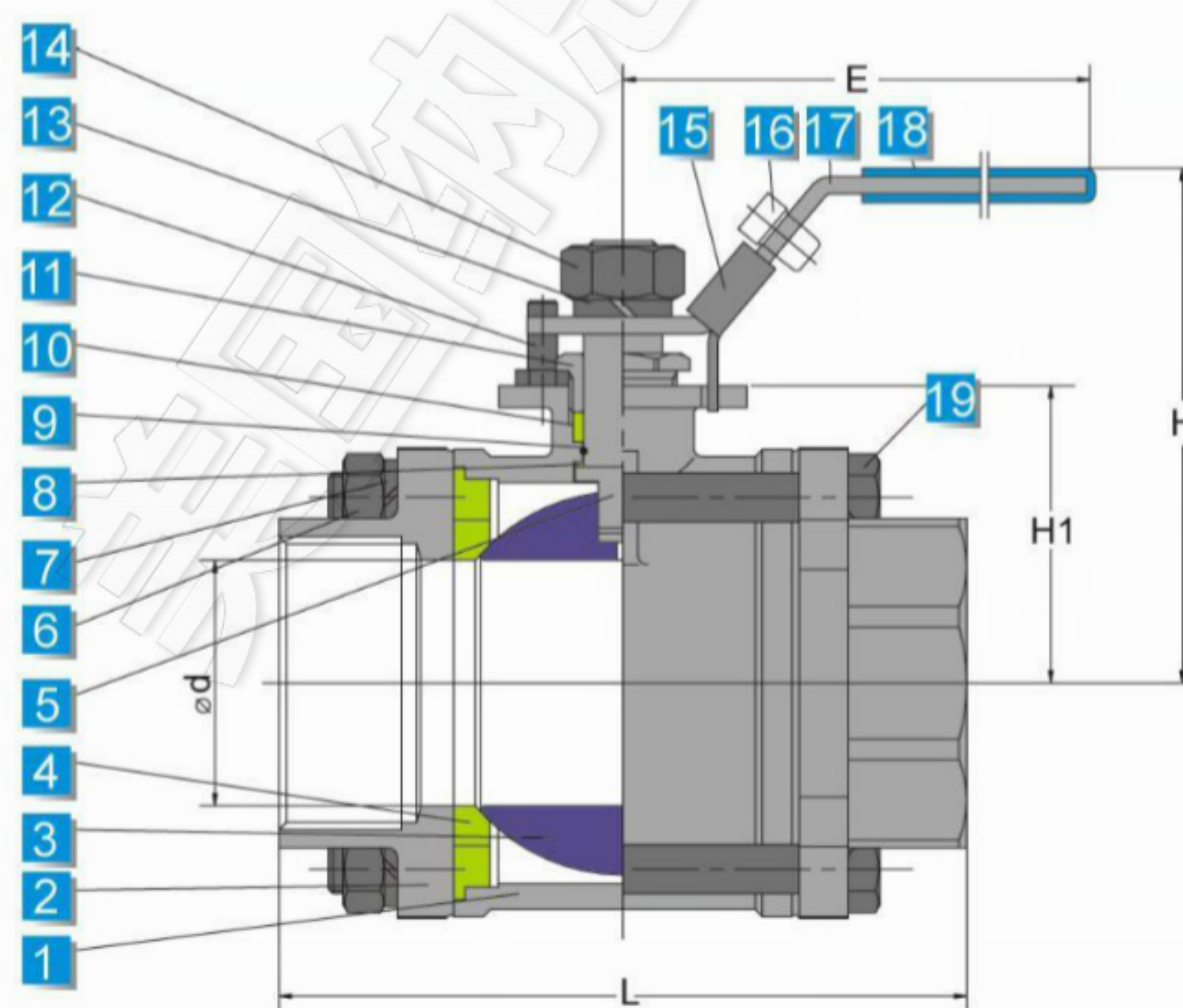
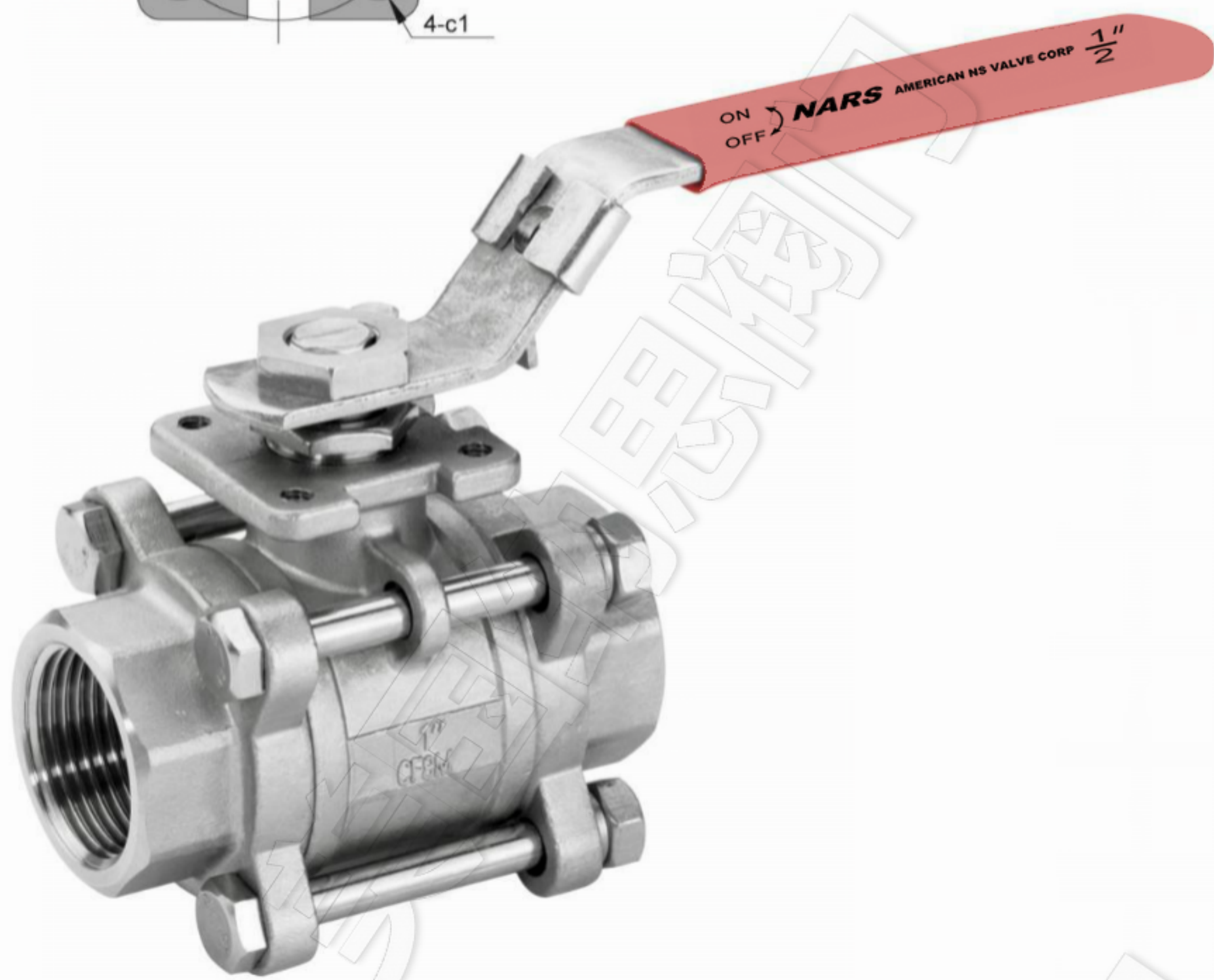
No.	PARTS NAME	MATERIAL		
1	阀体/Body	CF8M	CF8	WCB
2	阀盖/Cap	CF8M	CF8	WCB
3	球体/Ball	CF8M	CF8	
4	阀座/Seat	PTFE	RPTFE	PPL
5	阀杆/Stem	SUS316	SUS304	
6	螺母/Nut		A193-B8	
7	弹簧垫圈/Spring Washer		SUS304	
8	止推垫片/Thrust Washer		PTFE	
9	O型圈/O-Ring	VITON	FKM	
10	填料/Stem Packing		PTFE	
11	防松螺母/Stop Nut		SUS304	
12	定位杆/Position Pin		SUS304	
13	弹簧垫圈/Spring Washer		SUS304	
14	阀杆螺母/Stem Nut		A193-B8	
15	锁片/Locking Device		SUS304	
16	手柄插销/Pin		Plastic	
17	手柄/Handle		SUS304	
18	手柄套/Handle Cover		Plastic	
19	双头螺栓/Bolt		SUS304	

Threaded Ball Valves



Socket End

Butt Welding End



Unit:mm

Size	Ød	L	LB	H	H1	E	L1	S	B1	B2	P	C2	D1
1/2"	15.0	70	70	64	30.5	110	10	21	16	22	9	M5	36
3/4"	20.0	75	85	67.5	34	110	14	27	21	28	9	M5	36
1"	25.0	88	100	78	40	150	14	34	27	34	11	M5	42
1-1/4"	32.0	105	105	82.5	44.5	150	16	43	35	43	11	M5	42
1-1/2"	38.0	115	118	97.5	53	175	16	49	41	50	14	M6	50
2"	50.0	135	145	105.5	61	175	17	61	53	61	14	M6	50
2-1/2"	64.0	165	180	133	80.5	250	17	74	63	76	17	M8	70
3"	78.0	185	213	145.5	93	250	17	90	78	90	17	M8	70
4"	100	228	228	168.5	110	280	20	115.4	100	110	17	M8	70